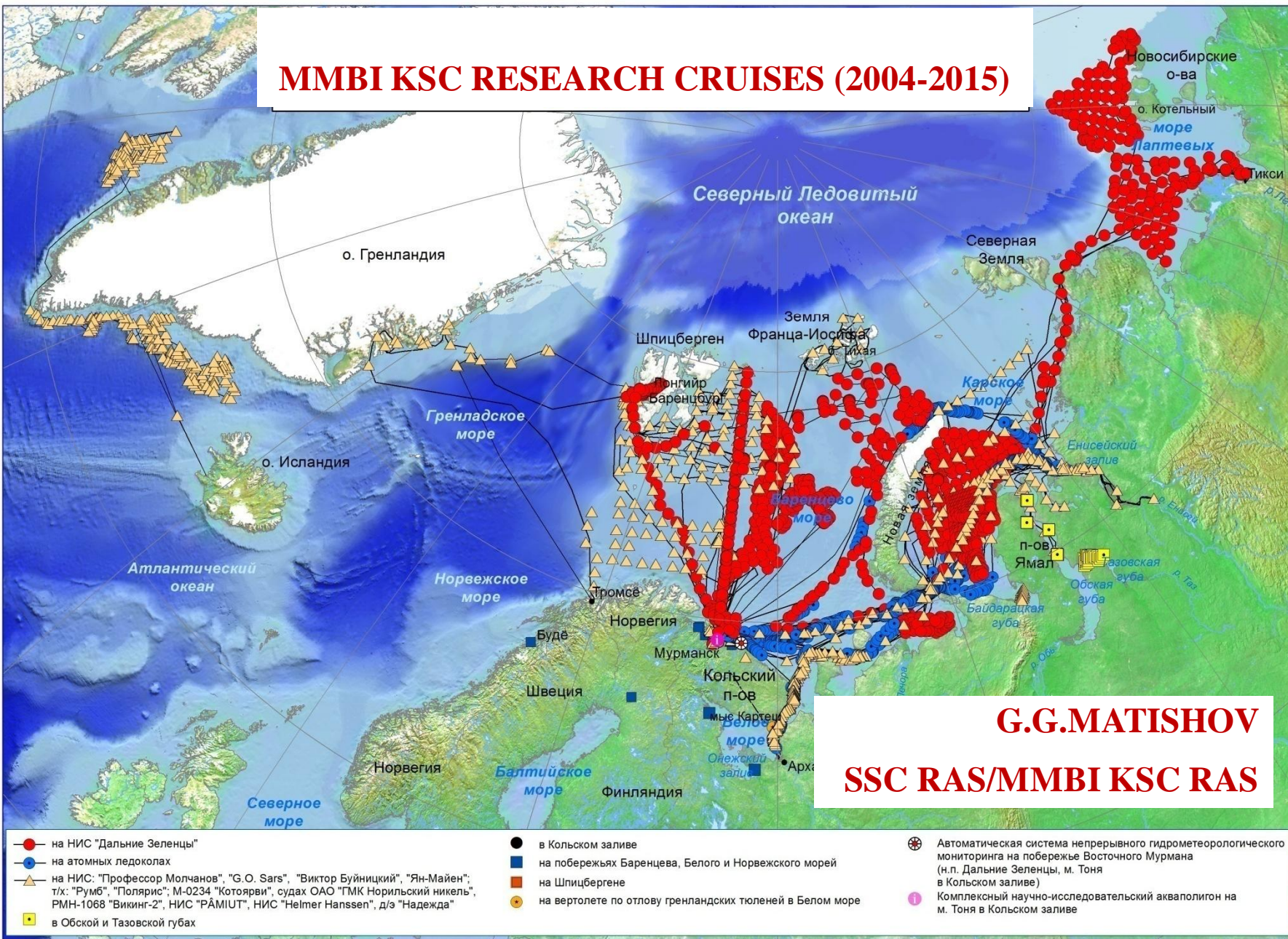


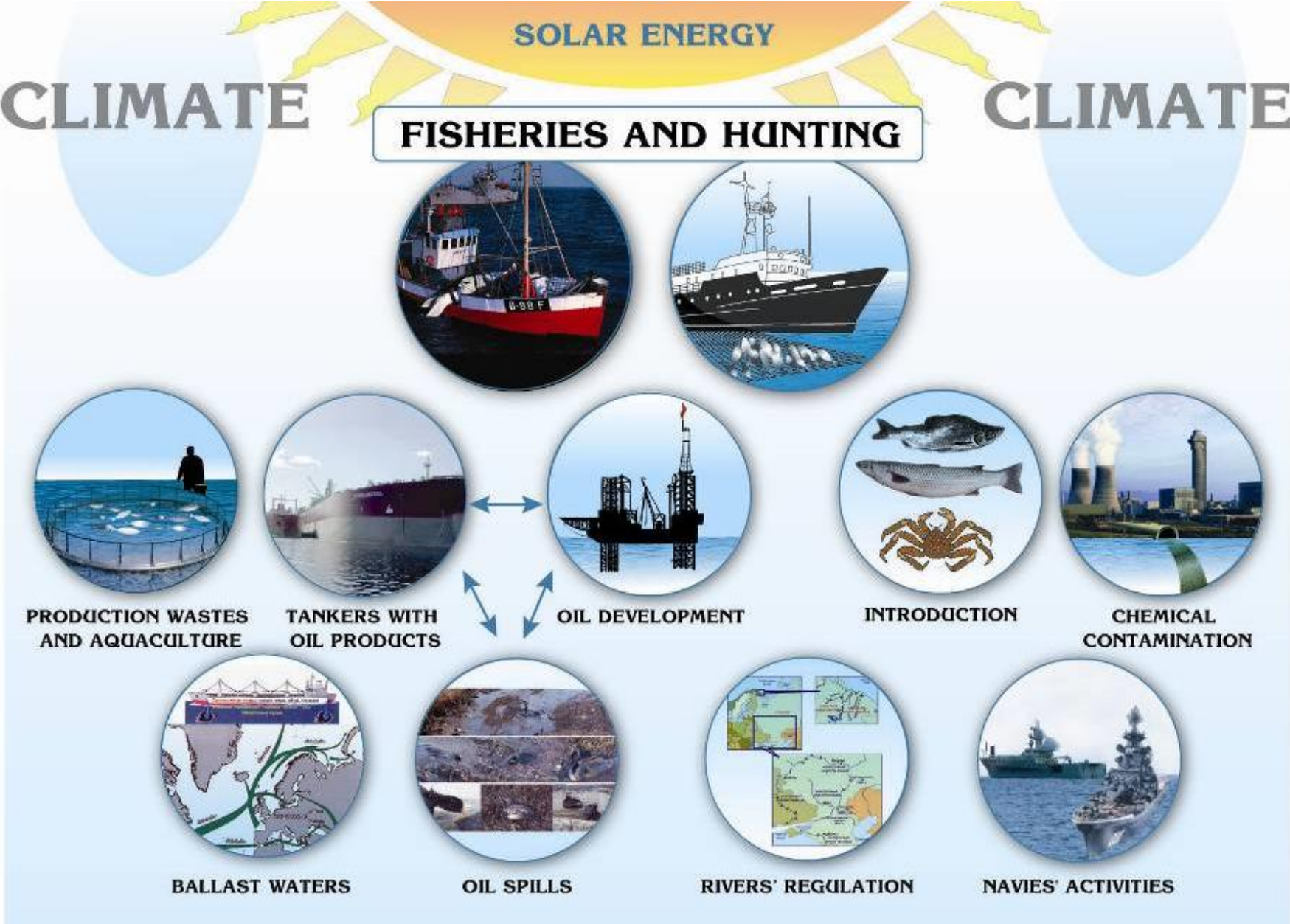
MMBI KSC RESEARCH CRUISES (2004-2015)

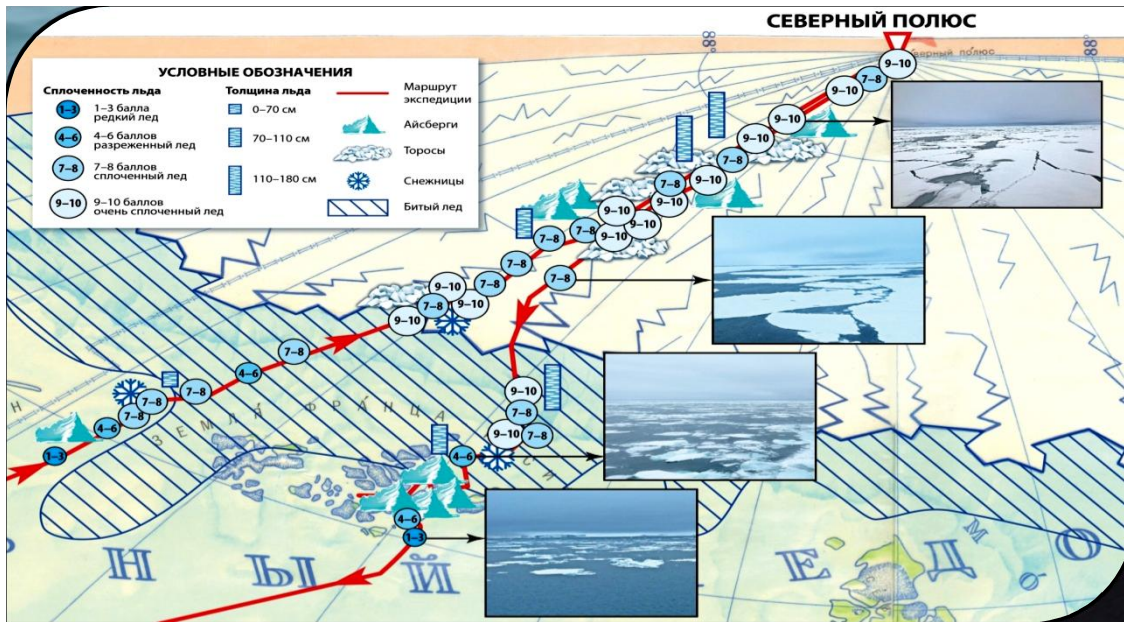


Zoo-benthos – An Indicator of Marine Ecosystems’ Pollution and Climate Changes



FACTORS IMPACTING MARINE ECOSYSTEMS AND BIORESOURCES



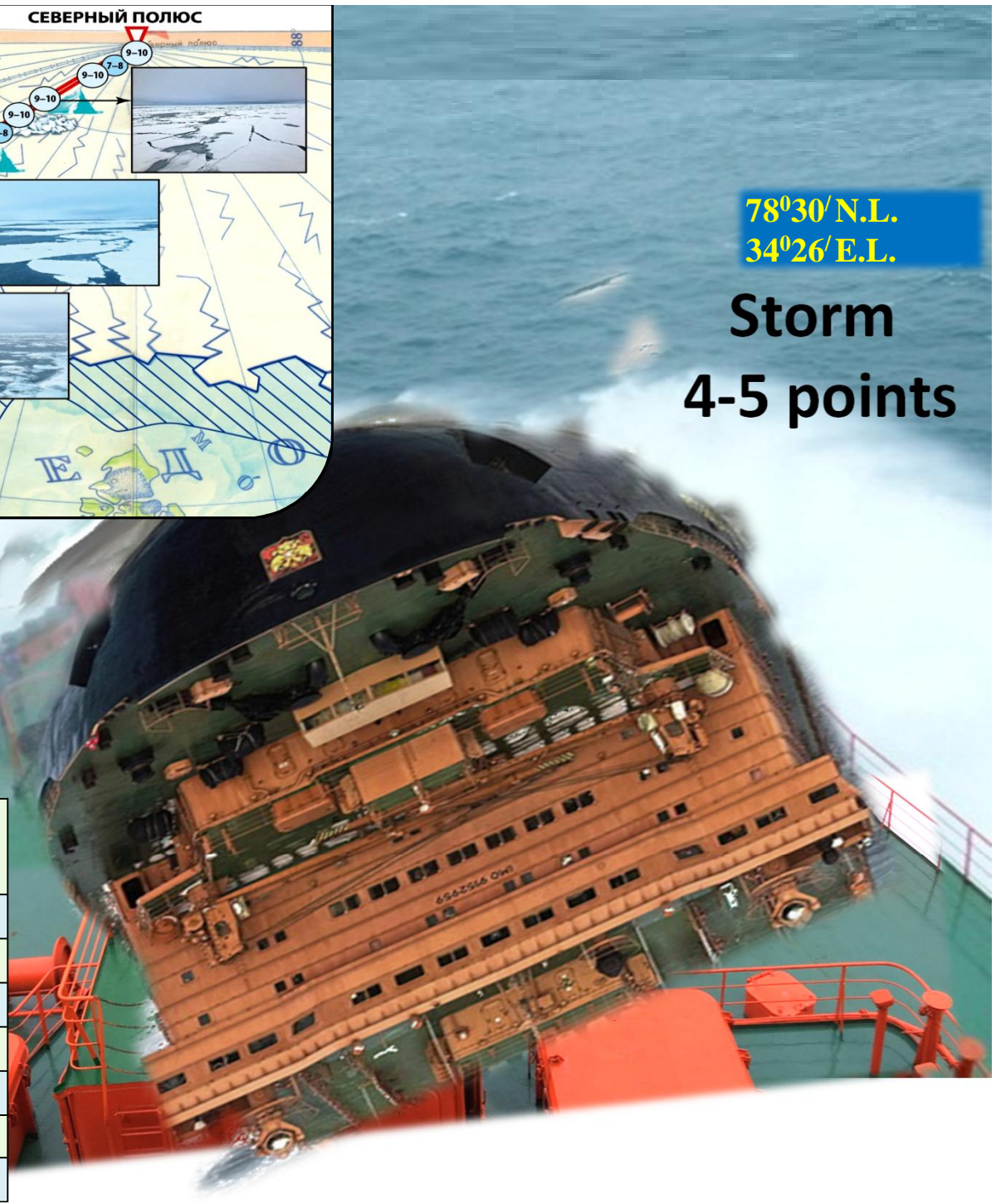


**78°30'/N.L.
34°26'/E.L.**

**Storm
4-5 points**

ICE-BREAKER « 50 YEARS OF VICTORY »

Length, m	159.6
Width, m	30.0
Height, m	55.0
Side height at midship, m	17.2
Weight of hull and build-up, t	9 635
Capacity (maximum), t	25 800
Average draft, m	11.0

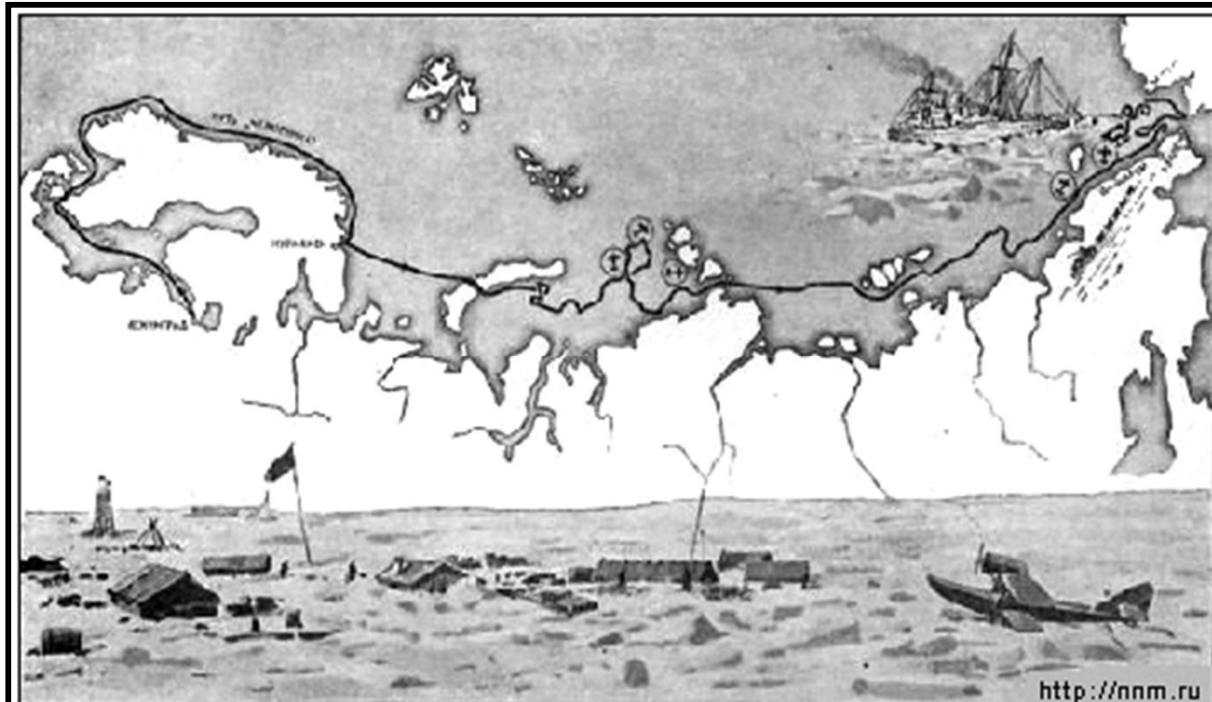


POLAR EXPLORERS (THE 19TH – EARLY 20TH CENTURY) AND CURRENT EXPEDITIONS IN THE ARCTIC (THE 21ST CENTURY)

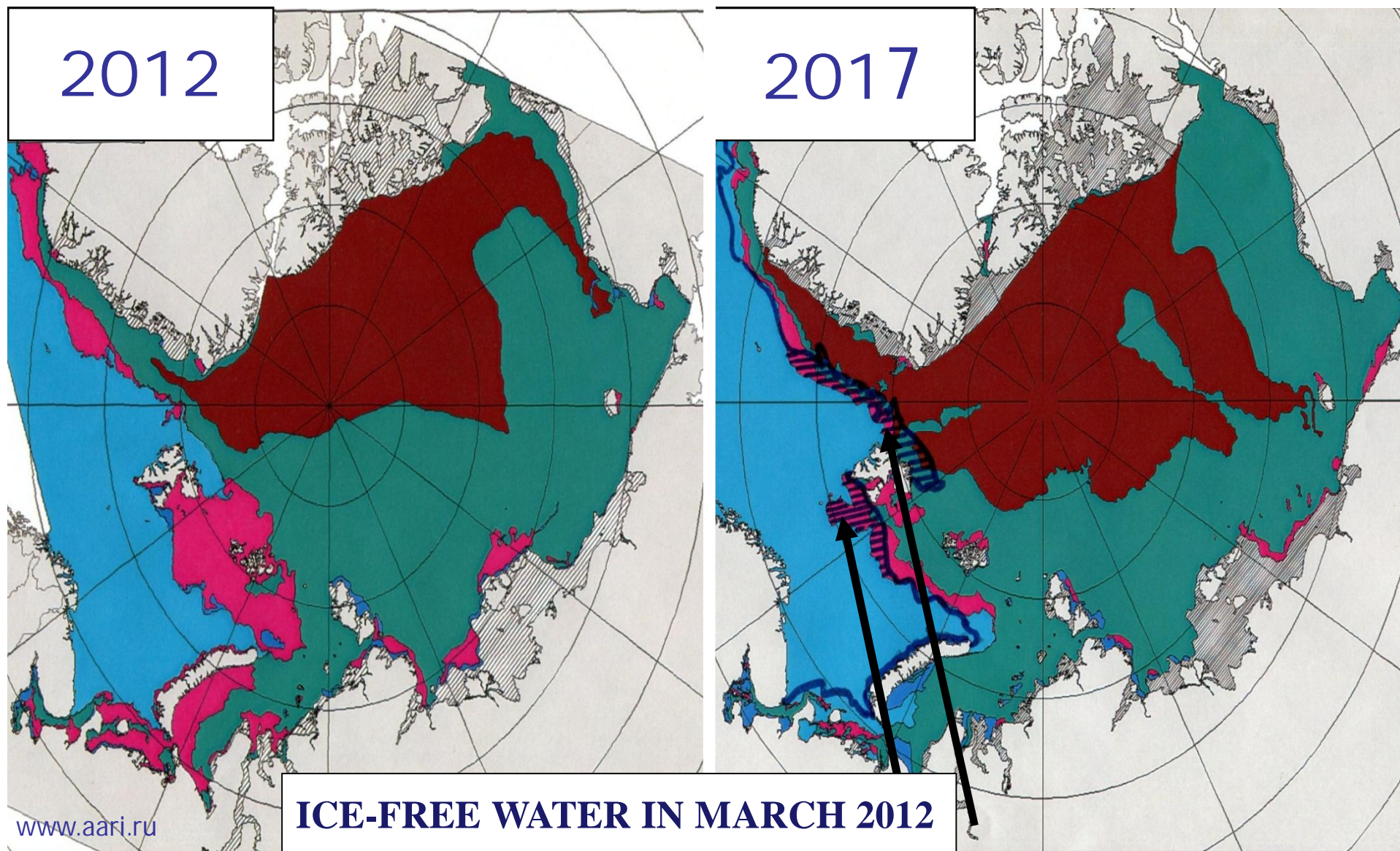


CRUISE OF THE CHELYUSKIN STEAMER ALONG THE NORTHERN SEA ROUTE

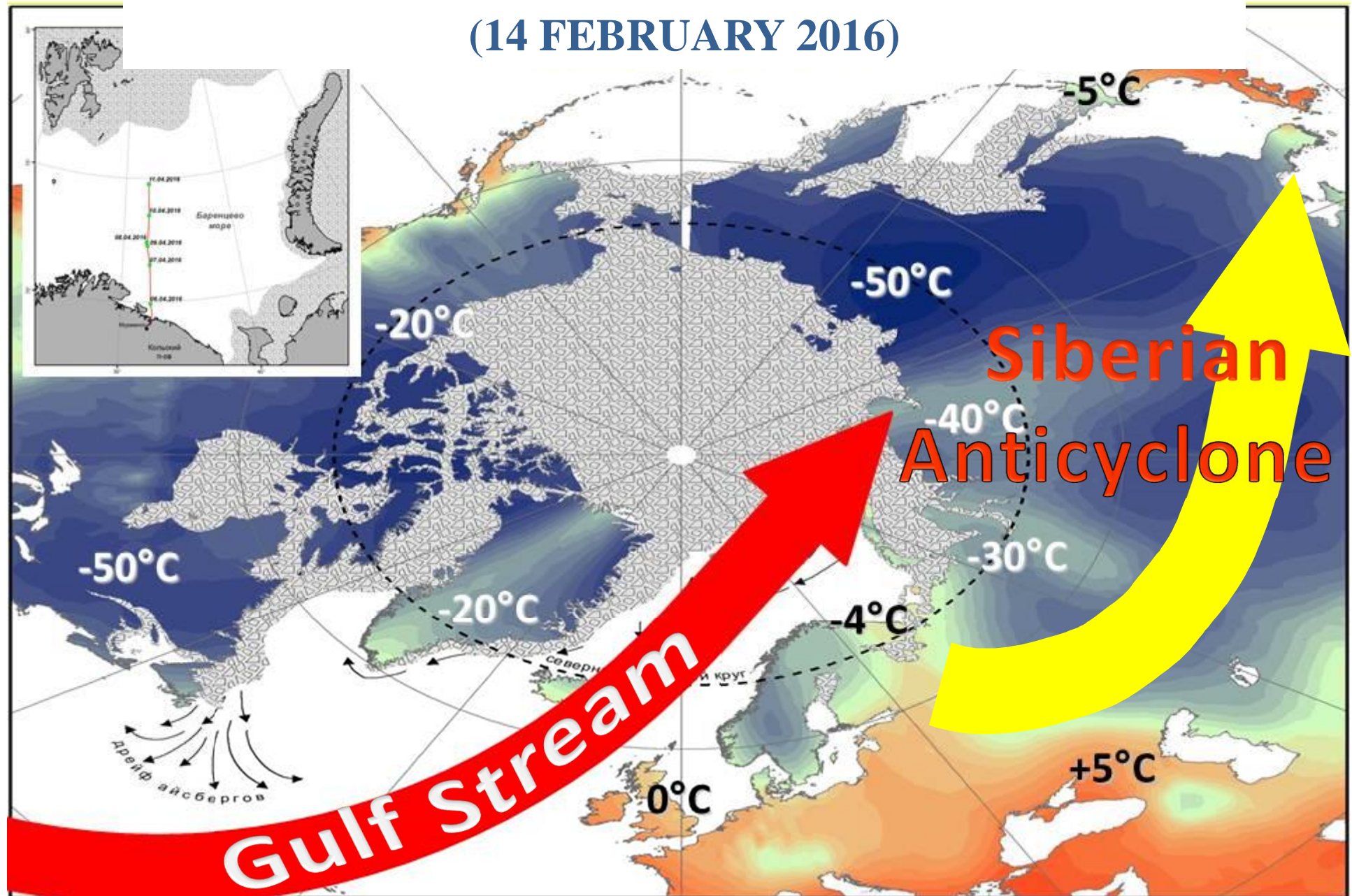
- left the port of Murmansk
- (2 August 1933)
- wrecked in the Chukchi Sea
- (13 February 1934)

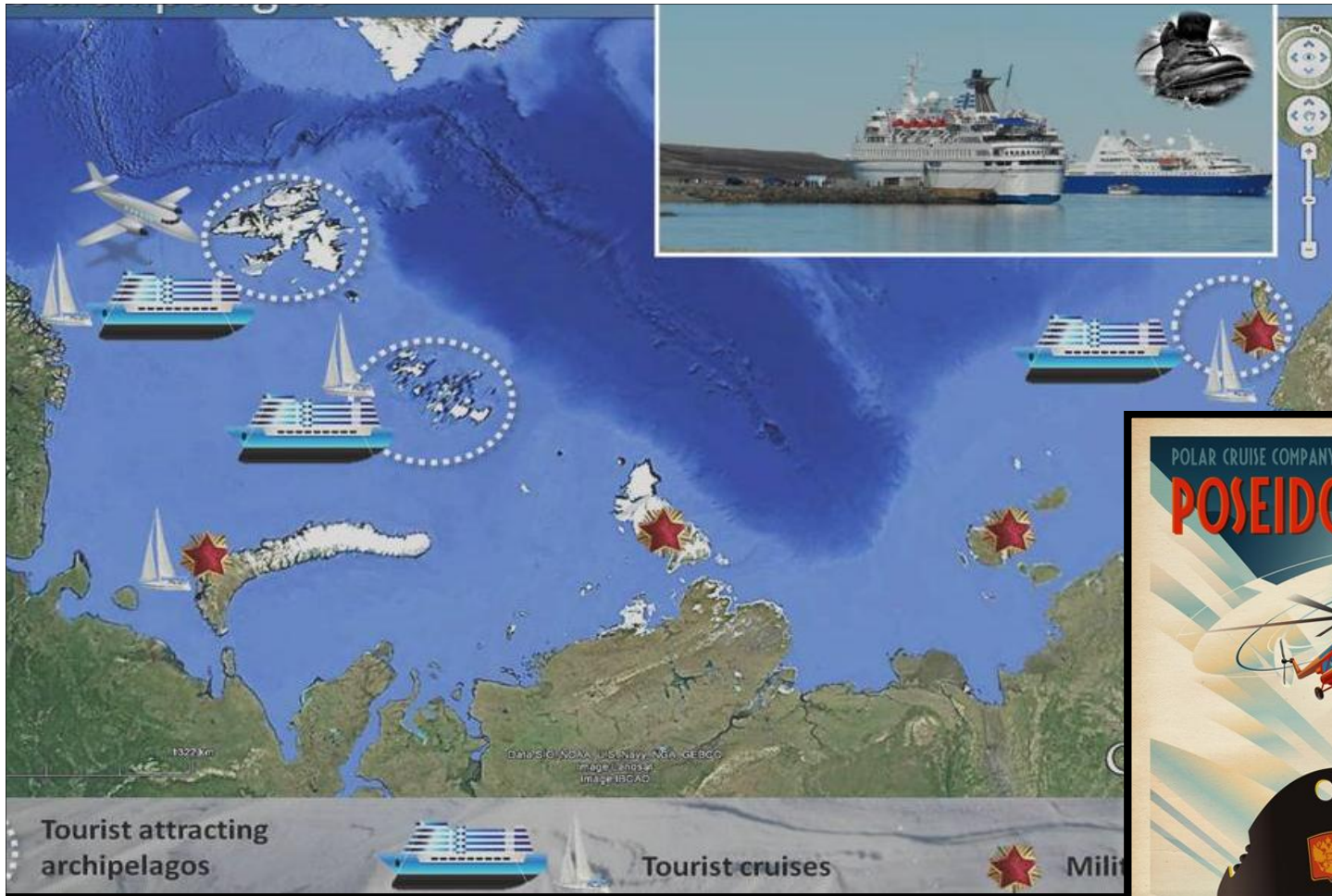


THE ICE CONDITIONS IN THE ARCTIC IN EARLY MARCH



DISTRIBUTION OF NEAR-SURFACE AIR TEMPERATURE AND ICE COVER (14 FEBRUARY 2016)

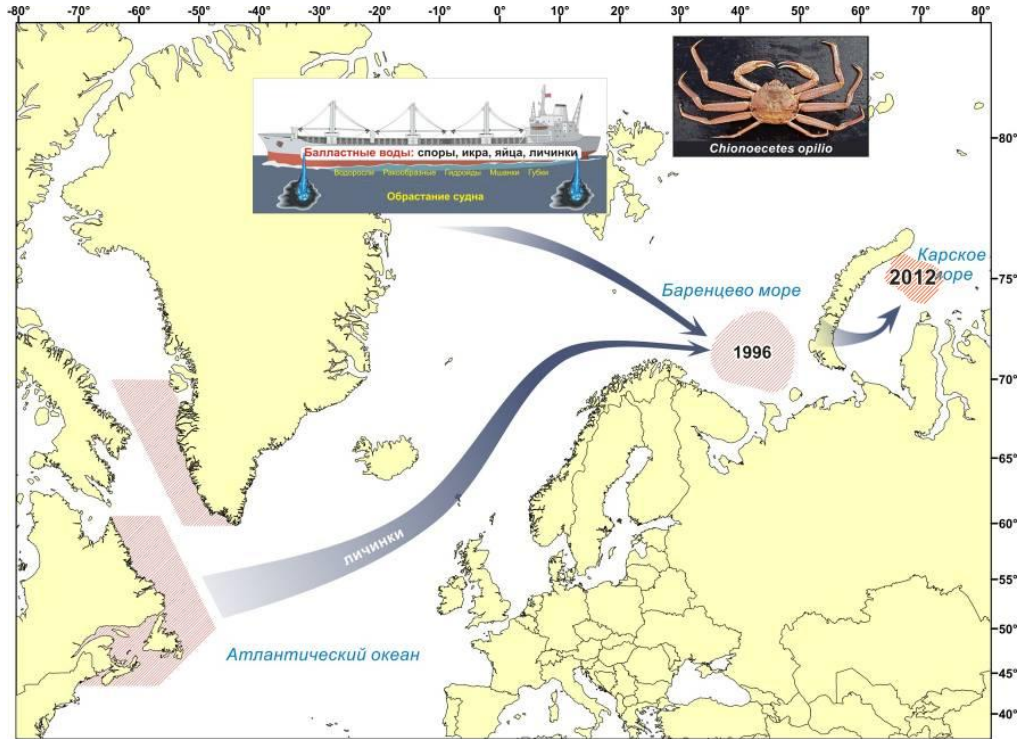




THE IMPACT OF HUMAN FACTORS ON TERRESTRIAL ECOSYSTEMS OF THE ARCTIC ARCHIPELAGOS



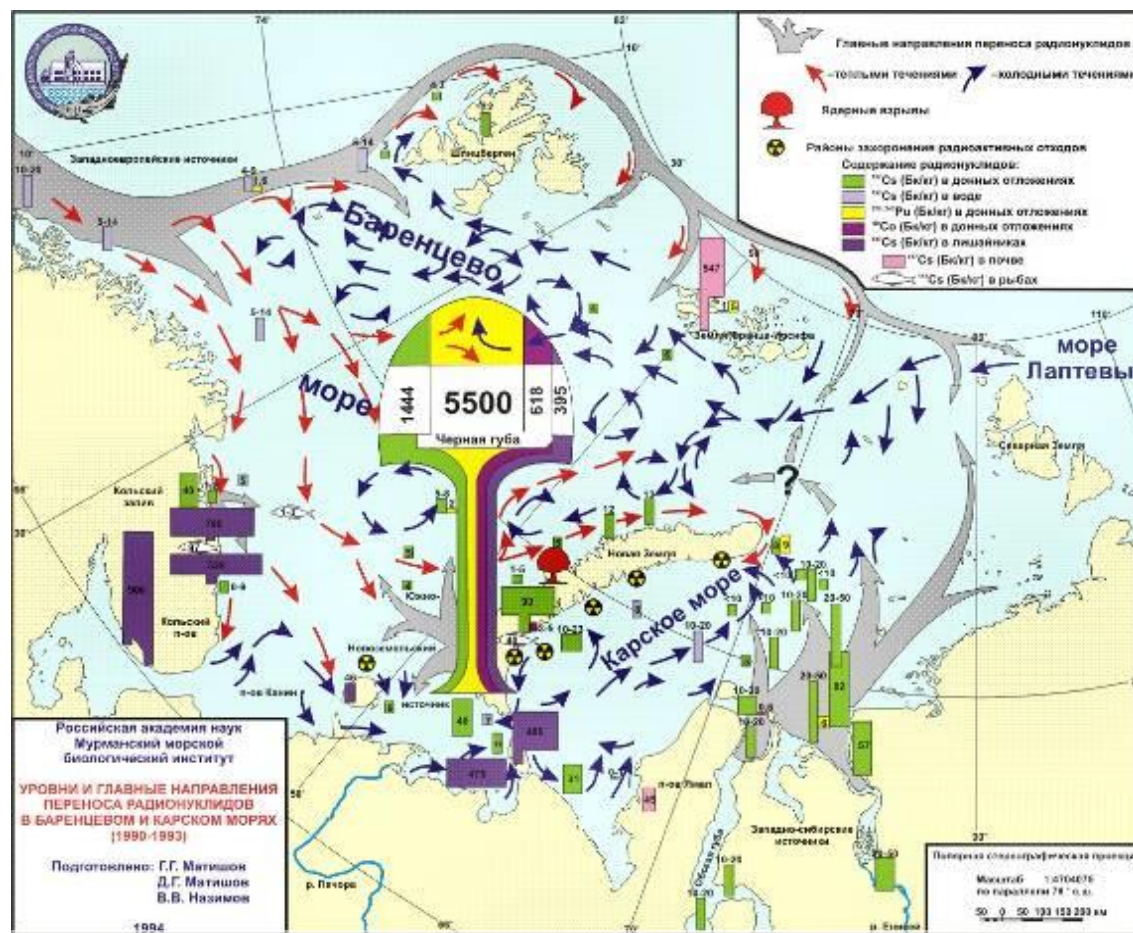
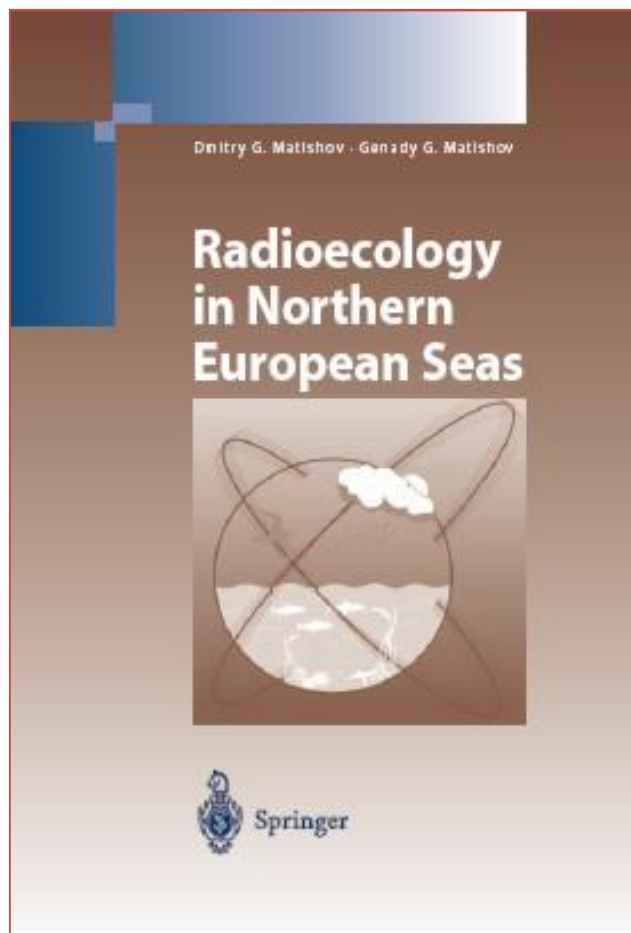
MARINE SHIPPING, RIVER-SEA TRANSPORTATION, AND ALIEN SPECIES' INTRODUCTION



**Supposed routes of snow crab
Chionoecetes opilio larvae
penetration into the Barents
and Kara Seas**

Radionuclide Levels and Major Transfer Directions in the Barents and Kara Seas

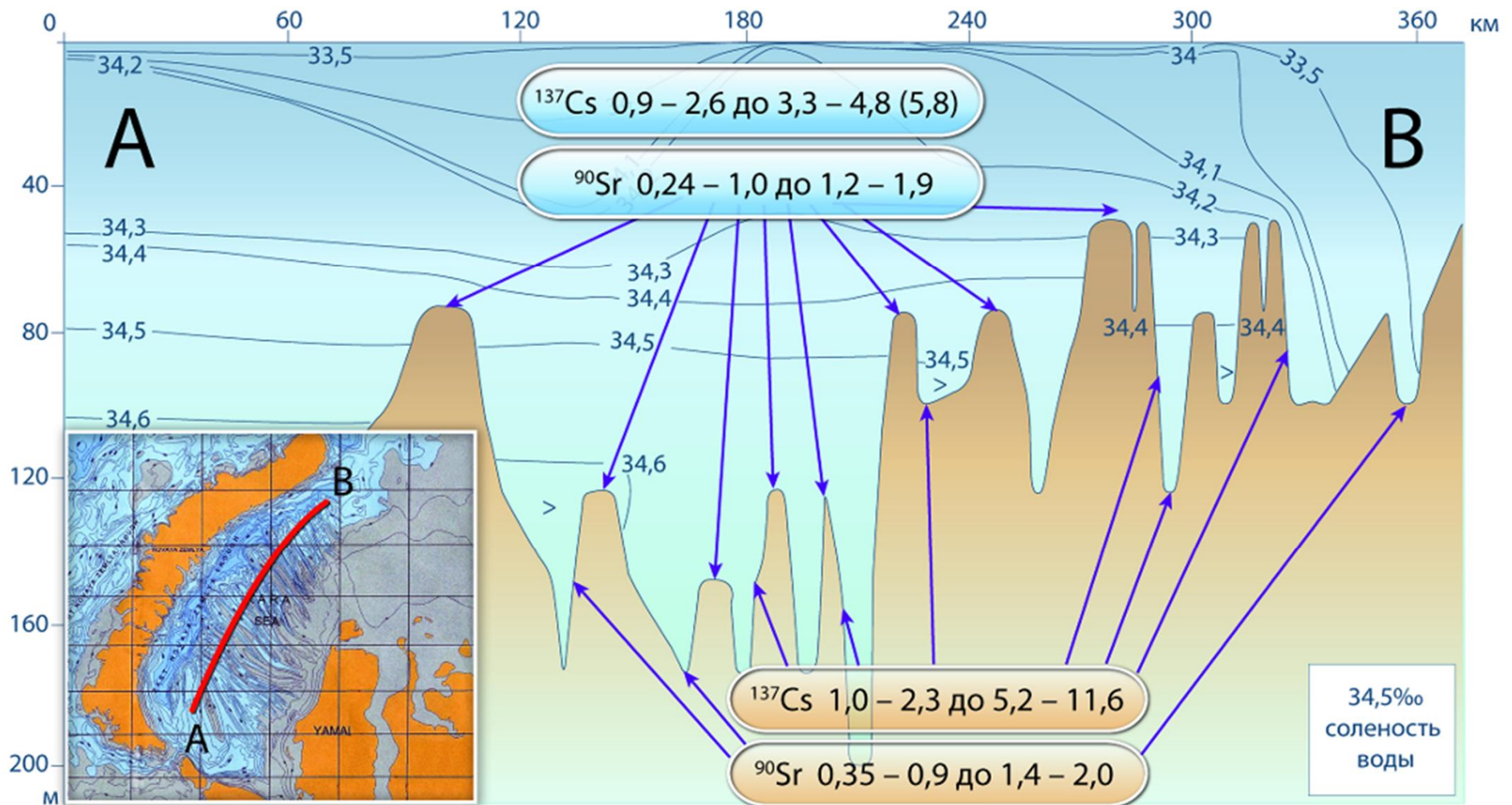
(Radionuclide Levels and Major Transfer Directions in the Barents and Kara Seas. Scale 1:4 704 075/ Edit. Matishov G.G., Matishov D.G., Nazimov V.V. Rovaniemi (Finland), 1994.)



Матишов Г.Г. и др. СТРУКТУРА ПОТОКОВ РАДИОНУКЛИДОВ В АЗОВСКОМ МОРЕ (1986-2000 ГГ.)//ИЗВЕСТИЯ РАН, 2004, (3)

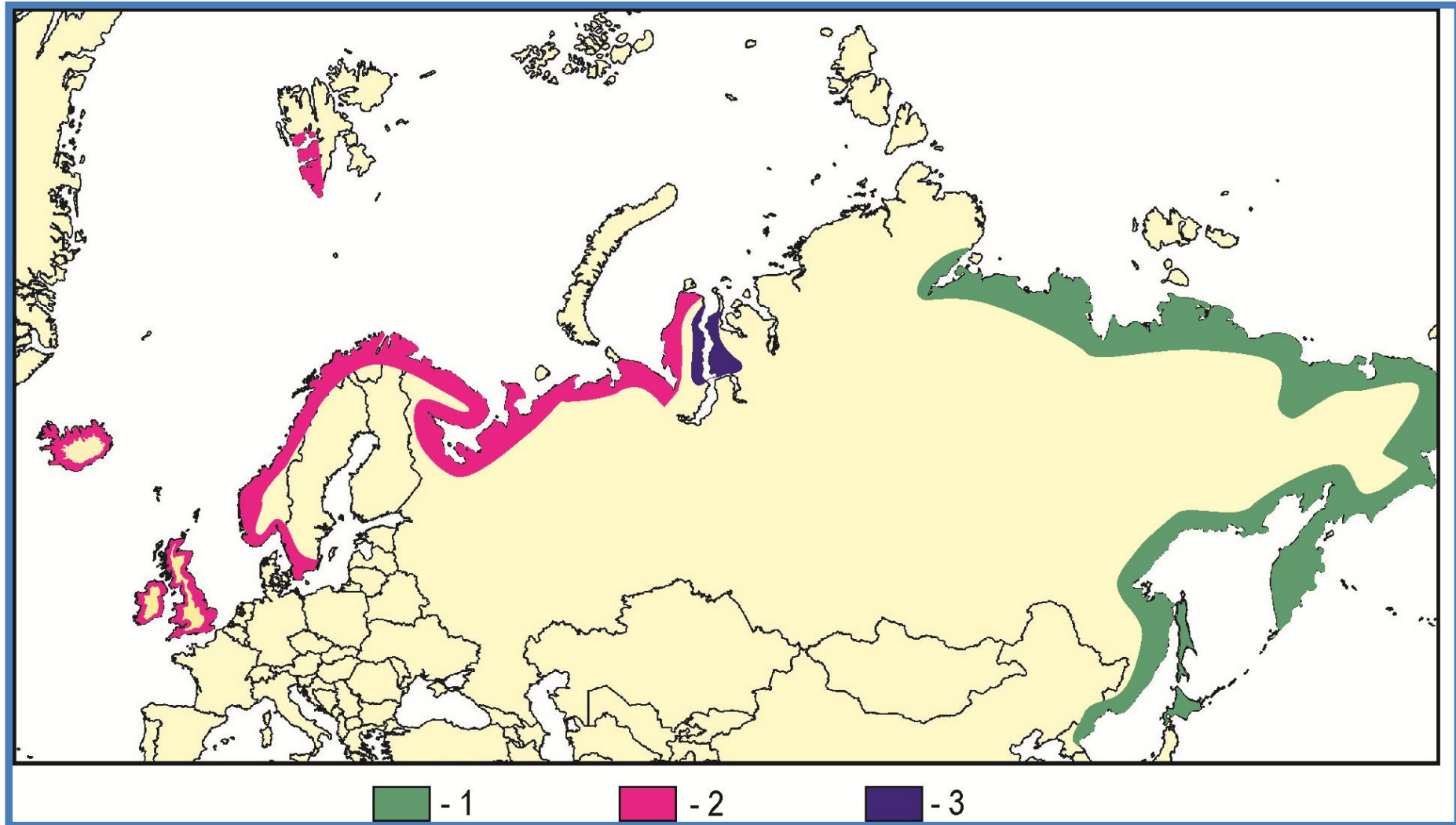
Матишов Г. Г. и др. ЕСТЕСТВЕННОЕ СНИЖЕНИЕ УРОВНЯ ИСКУССТВЕННЫХ РАДИОНУКЛИДОВ В БАРЕНЦЕВОМ МОРЕ//ДАН, 2009, 427 (4)

Dependence of ^{137}Cs and ^{90}Sr concentrations in bottom sediments (Bq/kg) on the relief



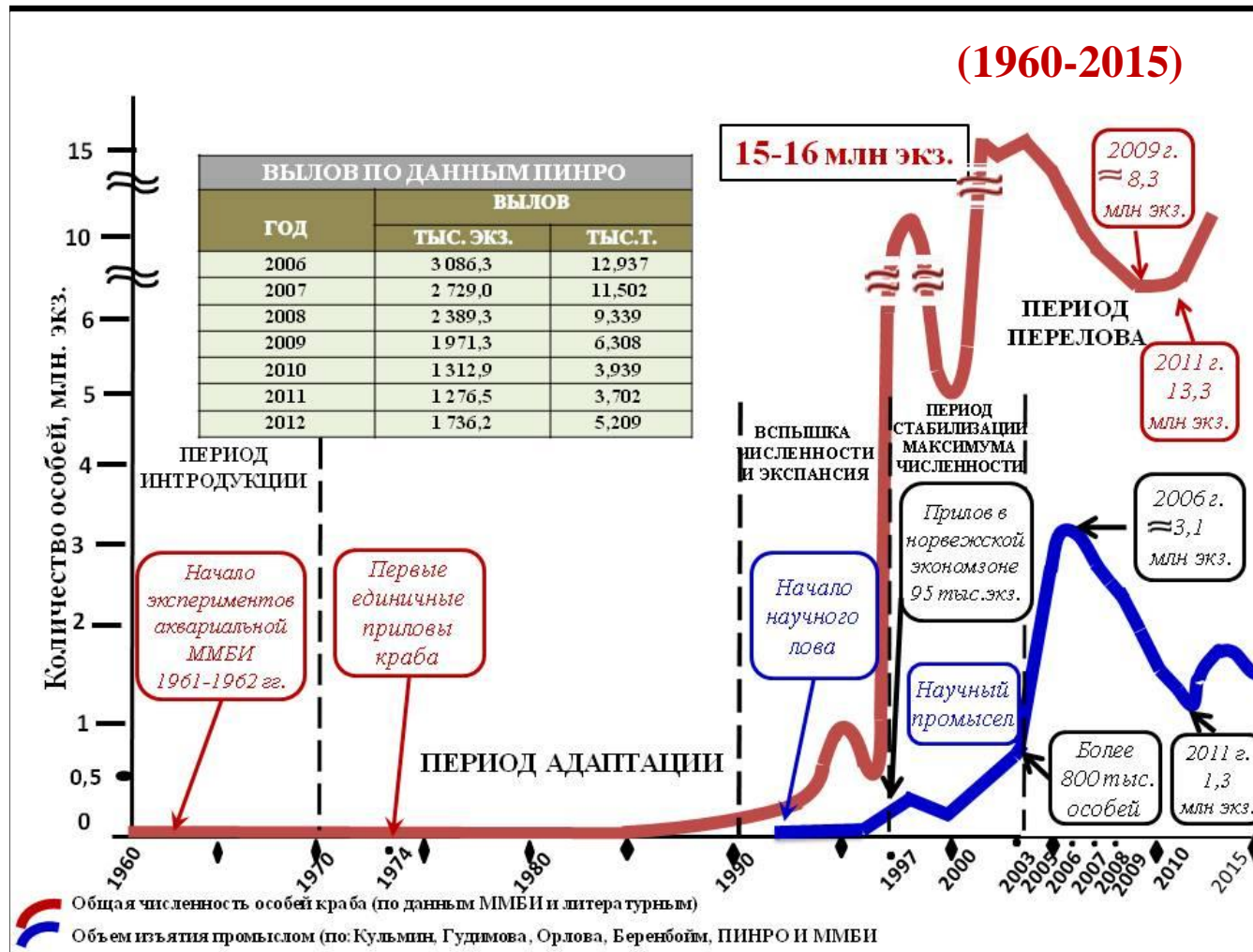


DISTRIBUTION OF HUMPBACK SALMON IN EURASIA



1 – Natural geographic range, 2 – Area of acclimatized species' distribution, 3 – Geographic range, inhabited by humpback salmon during the last years (Geographic range of unknown origin)

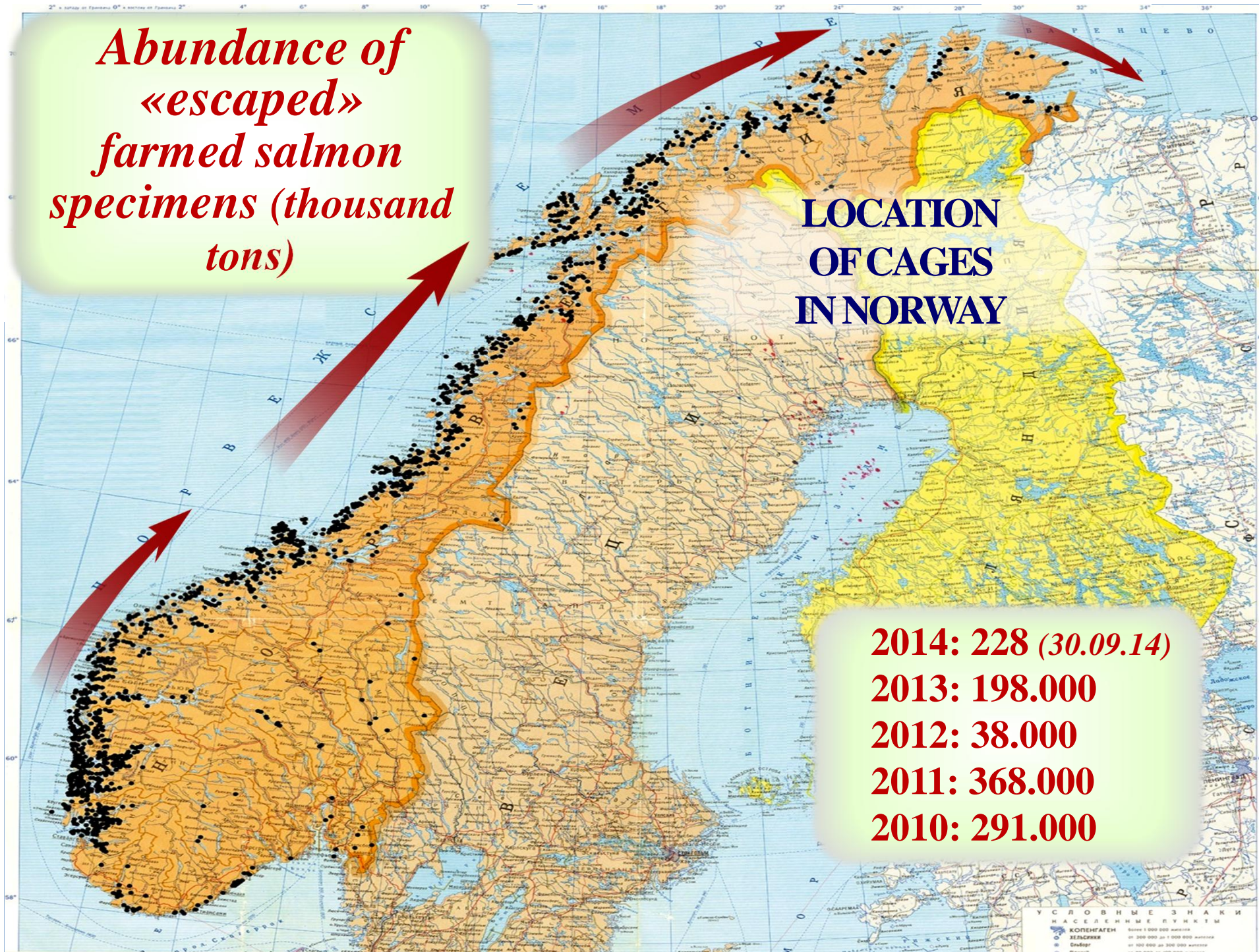
THE RED KING (KAMCHATKA) CRAB ACCLIMATIZATION AND OVERFISHING IN THE BARENTS SEA



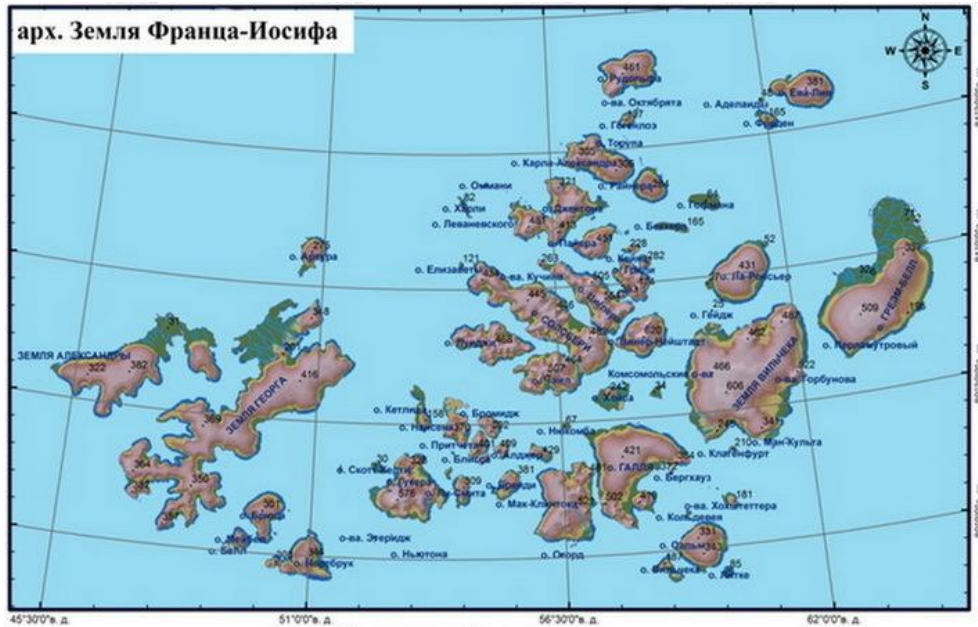
*Abundance of
«escaped»
farmed salmon
specimens (thousand
tons)*

**LOCATION
OF CAGES
IN NORWAY**

2014: 228 (30.09.14)
2013: 198.000
2012: 38.000
2011: 368.000
2010: 291.000



NATIONAL RESERVE «THE RUSSIAN ARCTIC»



The Territory of the National Reserve/Park covers Northern part of the Severnyi Island of the Novaya Zemlya Islands,
Large and Small Oransky Islands,
Loshkin Island,
Heemskerck Island,
the Franz Josef Land,
and a series of other islands.

Established: 15 June 2009

The total area of **1 426 000 ha**, including land areas — **632 090 ha**, sea water areas — **793 910 ha**

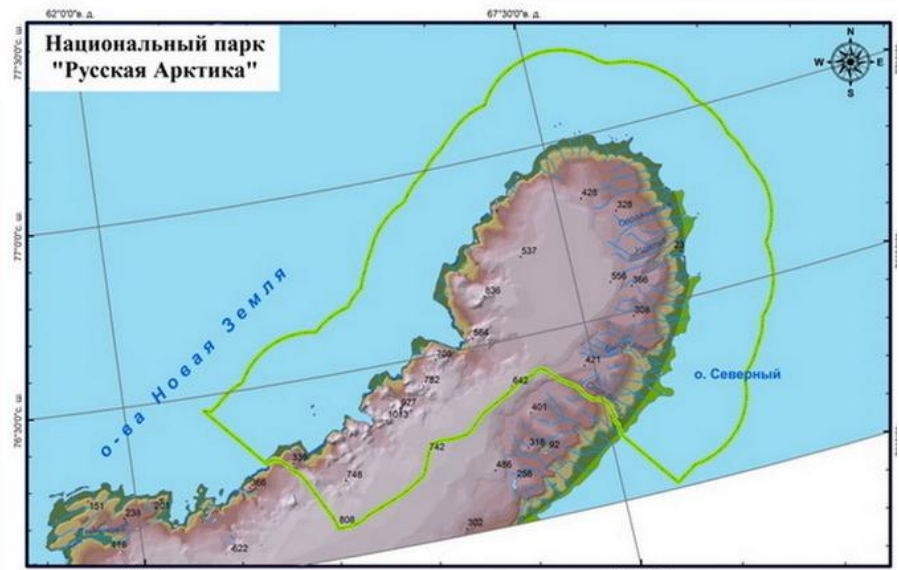
Director Mr. **Aleksandr G. Kirilov**

Born in 1982 in Arkhangelsk. Graduated from the Pomor State University named after M.V. Lomonosov (field: geography and biology). Worked for the TACIS International Project «Improvement of Drinking Water Quality in North-West Russia». From 2008 – at the State Ecological Inspection of Arkhangelsk Region. From 2010 to 2011 headed the Directorate of Especially Protected Natural Territories of Arkhangelsk Region. From 2011 – Deputy Director of the National Reserve/Park «The Russian Arctic», from April 2016 – Acting Director, since July 2017 – Director (instead of Roman Ershov).

Условные обозначения

Рельеф

- Зона образования айсбергов
- 606 Отметки высот
- Галлия Название острова



Условные обозначения

Гидрография

- Море
- Реки
- Озера

Рельеф

- Зона образования айсбергов
- 606 Отметки высот

Масштаб: 1:1 000 000
(в 1 см 10 км)



Айсберг

Парусная яхта

ПТС «Мангазея»

6

Комплексная станция отбора проб

★

полярная станция



Птичий базар



Белая чайка



Кайра



Белый медведь



Морж



Кольчатая нерпа



Тюлень хохлач



Сайка

Северный Ледовитый океан

